

Intuitive Expression

Julie Wrathall

Creating art is a magical experience, an escape into a fantasy land, where time passes as a child, with all the urgency of studying snails, making daisy chains, cloud watching, and blowing dandelion clocks.

Creating art is a magical experience, an escape into a fantasy land, where time passes as a child, with all the urgency of studying snails, making daisy chains, cloud watching, and blowing dandelion clocks. My aim is that some of that comes across in my work..

A moment to slow down, to reconnect, to smile and remember some of the simple things in life.

Lockdown gave many of us the time to slow down. To think about what could be changed, and brought about many new beginnings. 2020 connected me with some amazing online communities; intuitives, healers, artists, and heart and soul inspired people.

Listening to their stories, connecting and sharing ideas, has really shone a light back onto

the intuitive nature of my work. I had the space to reconnect with the art that really lights me up, and the trust in my work to create mystical, magical pieces, with confidence in the art I was creating.

I'd previously seen an artistic life as more of a curse than a blessing, I'd had more 'starving artist' stories than you could shake a stick at!! But I now see my artistic talent for the gift that it is.

The ability to create images that people really connect with. I now see as an honour, and a skill to be celebrated. I am so grateful for the people who have helped me to see this.

Despite all those years of mind monkeys every time I started a new painting, shouting "What the heck are you doing?!" somehow deep down, I always KNEW.

I've taken a less than traditional route with my art. I paint with hot molten beeswax, which is called encaustic wax painting. It's a really confusing word, and so, the first hurdle is always explaining what encaustic is, and why it won't melt and run down the wall...!

Even after explanation, most people still have a puzzled look on their face... in short, encaustic comes from a Greek word, meaning 'to burn in' and relates

specifically to painting with hot molten wax.

I work at very high temperatures, painting with anything from an iron, to hot plates, a heat gun, or blow torch. The beeswax has added waxes, resin, and pigments, and as the work cools,

it solidifies and settles into its final resting state to create the finished image. There are many many ways to paint with it, and can range from simple techniques to extremely complex methods. I use and love them all. My advice is, don't get hung up on the mechanics of how, what and will, just observe and see if you connect with the art!

Despite people thinking I was utterly mad because I was painting with this almost impossible to get hold of medium - and that nobody understood, I always had that feeling, deep within my gut, that THIS is what I'm supposed to be doing. I

Despite all those years of
mind monkeys every time
I started a new painting,
shouting "What the heck
are you doing?!" somehow
deep down, I always
KNEW.



Time stands still, and I have no idea how many hours or minutes are passing.

couldn't explain it. I just knew. Often, my work didn't make sense, but then someone would say, 'It just spoke to me!' and I knew that I'd been creating that piece for that person, whether it made sense to anybody else or not.

My art is very intuitive so I rarely make preliminary sketches. I am drawn to an image which I might take inspiration from, fire my hotplate up, and the magic starts. From there I will be drawn to colours, or textures, which I will layer and adapt as I go.



Time stands still, and I have no idea how many hours or minutes are passing. I simply go with what feels right until I'm compelled to stop. Sometimes a piece is finished in a session, other times it can take months.

Top: Julie working
Middle: Encaustic paint in its solid form
Bottom left: Encaustic Medium with brushes
Bottom right: Mixing colours up on the hotplate



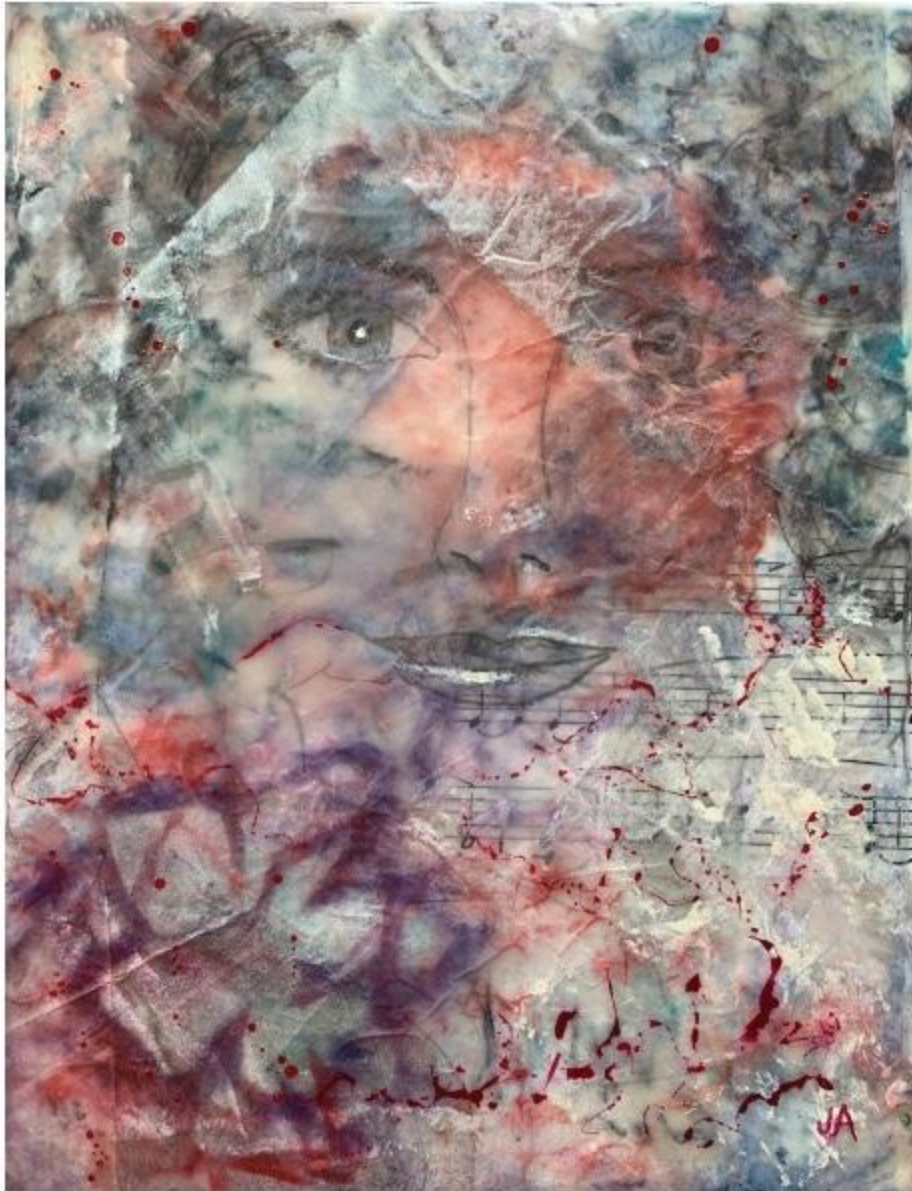
Any story to my pieces usually comes towards the end of the finished painting, and I often discover a secondary image within them that I hadn't intended to create. A person's face might appear, or an animal, or image, and that can contribute to the title or the story.

Other times, there is no big story, the sense and feeling of the colour is enough. The viewer interprets their own meaning.



'Awaken The Senses', is such a piece. Other than my insane love of turquoise, it doesn't have a big backstory, yet it has received a host of responses from people seeing sunlight cracking through the clouds, to seeing tropical beaches, or soul-reviving water elements. I love hearing what it means to people, and their interpretation of my work.





'Beneath The Layers' is a gentle, yet powerful depiction of a woman, evolving through the layers of her lifetime. I sketched the image of the lady 35 years ago, when I was 15 years old.

I came across her, and using photo encaustic techniques, have added three layers of the same image within the wax, allowing barely visible snippets to peek through. The music symbolises her song, her story, unique to her. Slowly revealing the woman she really is, along with a knowing that there is so much more to come.



'Mermaid Spirits' is my largest work yet, she is six feet tall, and proved quite a challenge physically to create! She started from an image I'd seen of a Flow Goddess rising from the water, hands aloft, literally oozing power. I was transfixed by the image, and loosely took that concept to create this piece. She isn't about a perfectly proportioned person, simply a powerful goddess spirit, who connects deep at the core, and brings strength through her soul touching energy, and colour.





'Soar' is an example where a secondary image came through. I was focusing on abstract bird / angelic forms, soaring on thermals, way up into the heavens - a glorious textural blend of pinky purples and light powder blue.

A lady came in for a workshop and was transfixed by my painting of the cherub, I couldn't see a cherub at all! Until I saw it... and then I couldn't unsee it. That has happened countless times in many paintings!!



This image is an example of how the colour of encaustic art can change. When the light hits it at certain times of the day - or year - the art work will literally reflect in a room, and glow as if it's luminous. It's not predictable, and happens when you least expect it.

If you look at the three paintings in this picture, you will see how the pinks all absolutely 'zing' where the light hits. It's another reason I have totally fallen in love with this medium. For me, it is literally magic, even if it makes it nigh on impossible to photograph your artwork. But it always makes for some spectacular unexpected shows throughout the year.

The colours and textures created with hot molten beeswax bring a light, depth, freshness, and luminosity that I don't experience with any other mediums. Its light is dynamic, and impossible to capture, and as you can see from the photo above, it continues on a constant moving cycle of change, long after I have finished painting it.

I love getting feedback from people who say they still love their paintings, how much they feel uplifted when they view my work, when I hear "Wow!" or "It just spoke to me." I know then my work is done.

Throughout the years, my encaustic wax work has ranged from abstracts, to portraits and angelic goddess-like mystical pieces, but all with a common thread; they invite you to pause, and look deeper, to search out the light, glowing through, from deep within the layers of the painting.

I hope that my art has caused you to pause today, to connect and see glimmers of that light, and to think at the pace of daydreams and daisy chains, even for just a few moments.



Julie Wrathall creates high vibrational art, that lifts and soothes the soul.

Using artisanship, dating back over 2,000 years, she blends her own unique style, with ancient techniques; fusing layers of beeswax and resin, to create a unique blend of fascination, texture and colour.

Hinting at seen and unseen worlds, her work has an ethereal feel, full of light and intrigue, that invites the viewer to look deeper, to feel into the layers, bringing their own interpretation to the piece.

Julie's art continues to evolve long after it leaves her studio... light changes throughout the day can bring an almost luminous quality to her work. The reflective nature of the wax, resin and pigments, connect the viewer with unexpected moments as sunshine and light moves around the room... Moments of intense, uplifting, iridescent colour, catch you at the least expected times.

Every piece of Julie's original art is a one off... there can never be two identical pieces, meaning you will have your very own, bespoke, wax art... as individual and unique as you are.

Art is such a beautiful thing...

In my world, you don't need to be an art expert to appreciate my paintings, I simply want you to connect deep down with the images, colours and textures I have created. That's as complicated as it gets. I love helping people take their first steps into appreciating art... which can be a daunting task, there's so much unnecessary mystery, and confusion around art, so just trust the connection you feel to a piece, and ask any questions that come up, I'll be happy to help.

[Click here to view Julie Wrathall's Encaustic Wax Art, or to commission a personalised piece.](#)

All of my artworks are originals, I no longer make prints, or cards of my work.

Some of my pieces are painted in a single thin layer onto a specialist paper, these need to be framed, I have framed and unframed pieces available.

I also have pieces that are built up in multiple layers, onto solid boards, these are traditionally not framed under glass, they take up to six months to fully cure and harden, and are generally hung directly on the wall, or sometimes have a floating frame added.

Enjoy them all...

[Click Here](#)